

TCFD for Private Markets

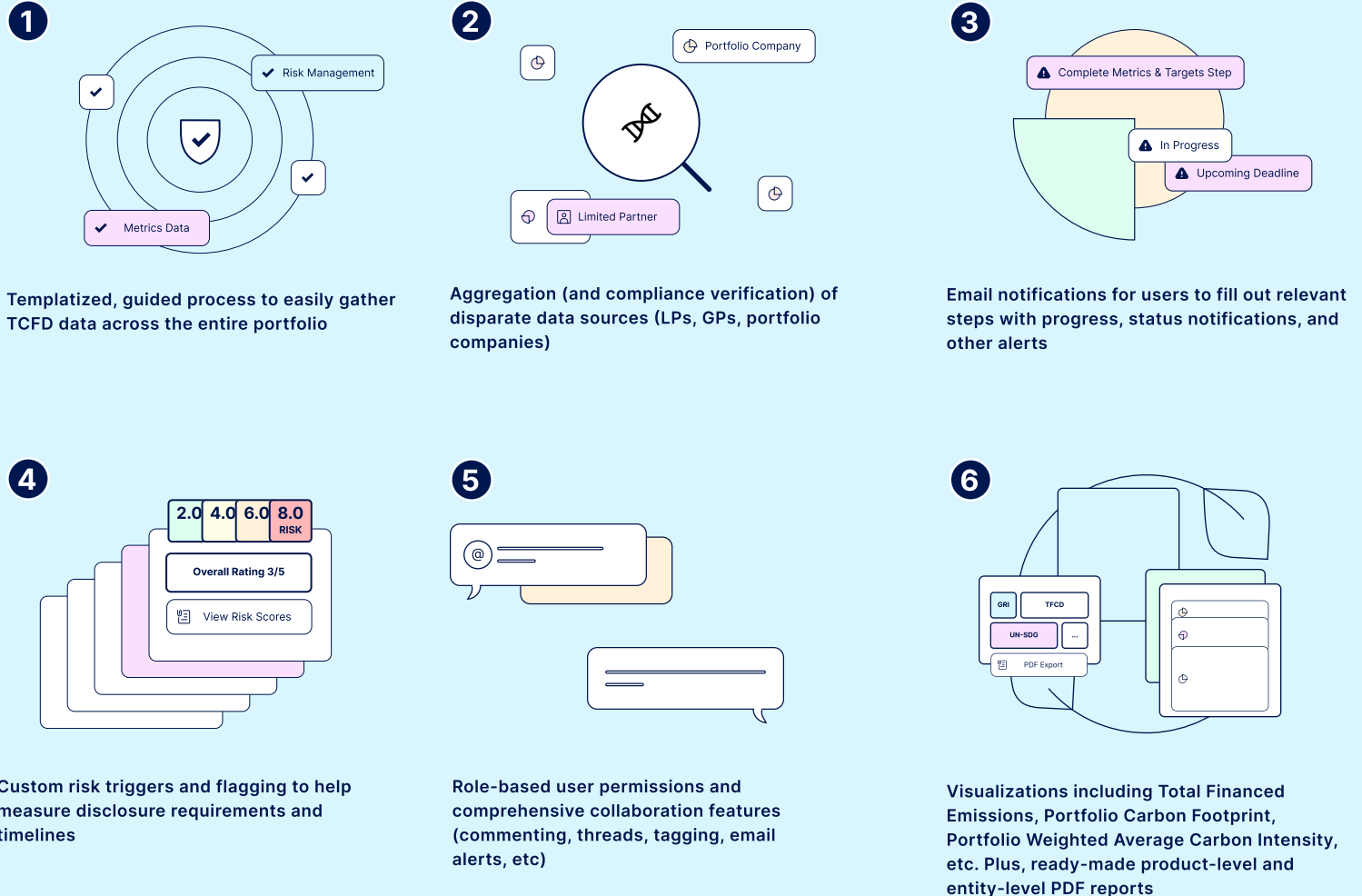
The Task Force on Climate-Related Financial Disclosure (TCFD) is top of mind for large companies and financial institutions in the UK with the mandatory reporting deadline of June 30th coming up. The TCFD framework was developed by The Financial Stability Board to improve and increase reporting of climate-related financial information. The TCFD framework is made up of 11 core recommendations, grouped under for main categories: Governance, Strategy, Risk Management and Metrics.

Certa's TCFD solution enables limited partners and general partners to easily collect the proper data across their entire portfolio and generate ready-made reports.

How does Certa's ESG Framework solution work?

Companies are buried by ineffective processes for aggregating and reporting ESG data. Certa's ESG solution enables companies to manage their ESG needs with a simple, easy-to-use, and customizable platform for seamless data collection, reporting, and insights. Certa offers workflow automation and expertise across ESG standard frameworks and regulations.

Why Certa?



Metrics & Targets

✓ GP Disclosure
TCFD Disclosure

✓ Please enter the disclosure year
2023

✓ Absolute Emissions: GP operational/direct Scope 1 Data (Tonnes [metric] CO2e)
0

✓ How are your GP operational/direct Scope 1 emissions calculated?
N/A

✓ Absolute Emissions: GP operational/indirect Scope 2 Data (Tonnes [metric] CO2e)
158

Submit

Collect data required for the 4 major TCFD categories with an automated template that connects all stakeholders

COMMENTS
My mentions

Do you have a Carbon Emissions Target? / **Core**

AY ayush 3 days ago
@sydney Manuela is awaiting confirmation from James post which I will do it

Do you specifically consider biodiversity, deforestation, or land use in your climate metrics? / **Core**

MF Manuela 8 days ago
Agree unless we could present in other ways? pie chart doesn't make a lot of sense here
@ayush @sydney how do we access responses here?

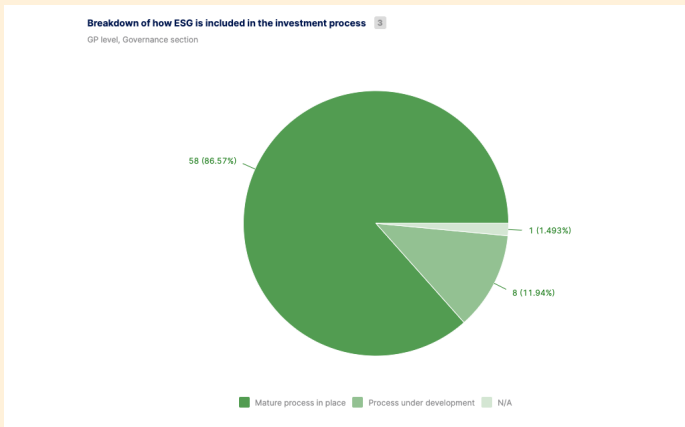
Is your GHG data verified, reported or estimated? / **Core**

MF Manuela 8 days ago
@James I would add this in appendix

Is your Carbon Emissions Target aligned to SBTi standard? / **Core**

MF Manuela 8 days ago
Yep agreed - can we move to the analysis tab?

Collaborate with stakeholders throughout the process and receive notifications to stay on top of mentions and important updates



Create exportable visualizations, dashboards, and ready-made reports

Fund Details
Select responsible group

- Basic Information
- Invite GP
- GP Questionnaire
- Underlying Holdings

GP Questionnaire
Select responsible group

- Metrics & Targets
- Governance
- Strategy
- Risk Management

Underlying Holdings Data
Select responsible group

- Invite PoCs
- Definitions
- Asset Information
- Metrics & Targets
- Governance
- Strategy
- Risk Management

Automate data gathering across the entire portfolio

Certa is a SaaS-based workflow automation platform that makes it easy for businesses to manage third party risk, compliance, and ESG. Certa's powerful workflow engine enables businesses to streamline processes, eliminate bottlenecks and inefficiencies, and break down silos via interdepartmental and internal/external process participants. Certa's no-code, drag-and-drop features allow clients to easily modify and customize their workflows to keep up with evolving business needs. By stitching together 100+ enterprise systems and data sources, along with an organization's legacy tech, Certa serves as your single point of intake and source of truth.

[Schedule a demo](#) to learn how we can help your firm manage ESG requirements